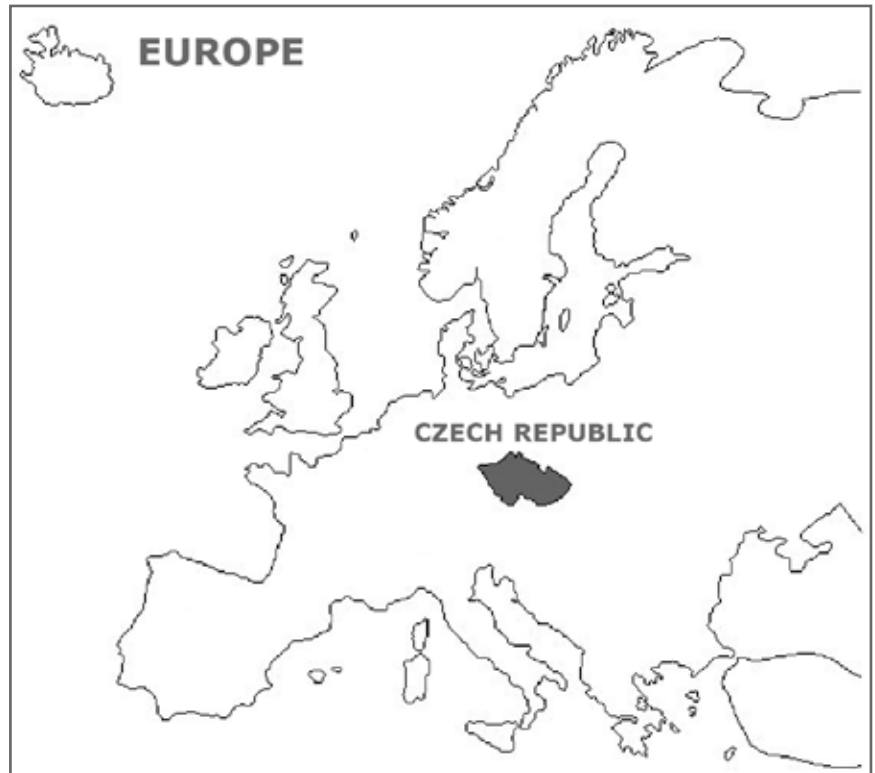


Driving directions to Elmarco

The headquarters of Elmarco company are situated in the Czech Republic, Europe



Take motorway No. 10 from Prague, on kilometre 77 take motorway No. 35. Liberec is about 130 kilometres far from Prague airport.

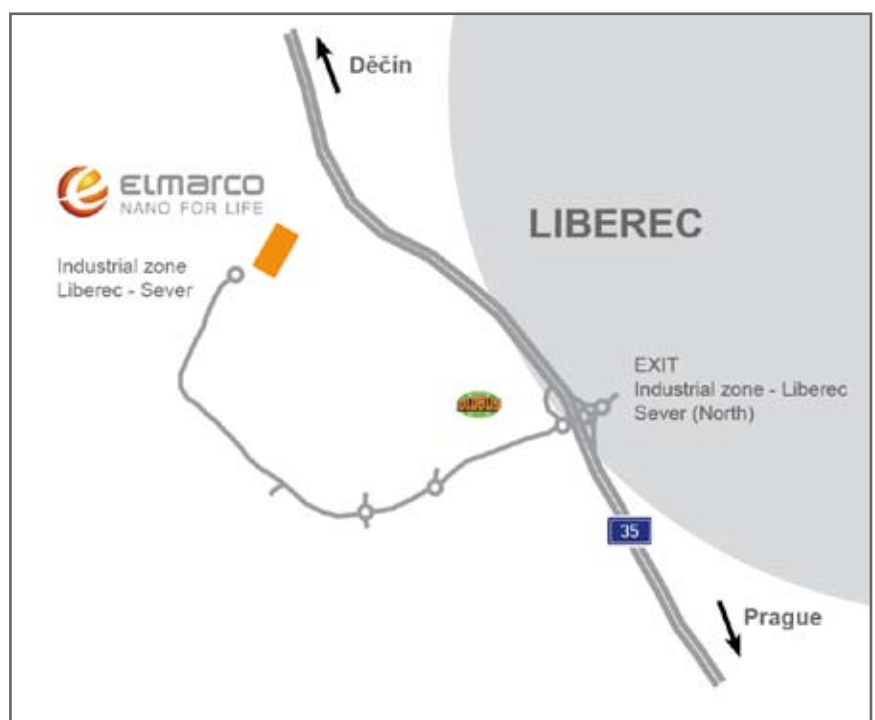


New Elmarco facility is situated in the Liberec North Industrial Zone

GPS:

50°46'49.353"N

15°1'12"E

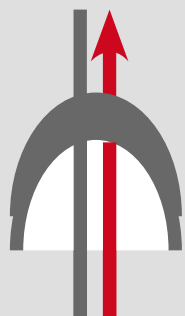


Driving directions to Elmarco from Prague

Upon arrival to Liberec stay on the motorway.



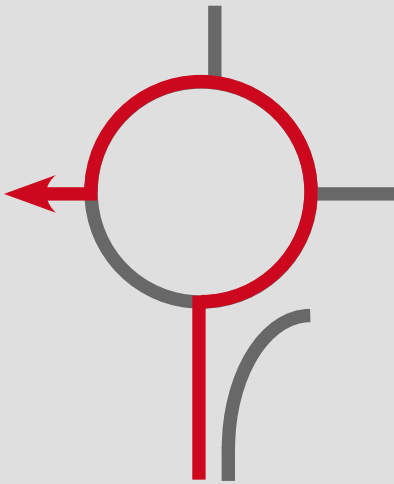
Go through a tunnel



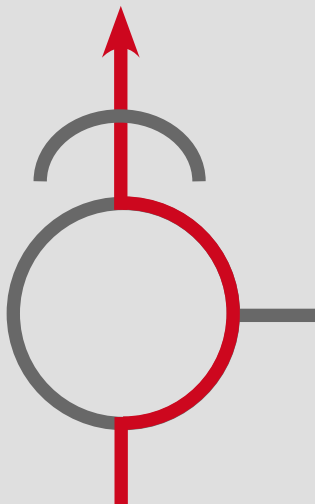
Take the exit (direction Industrial zone „SEVER“)



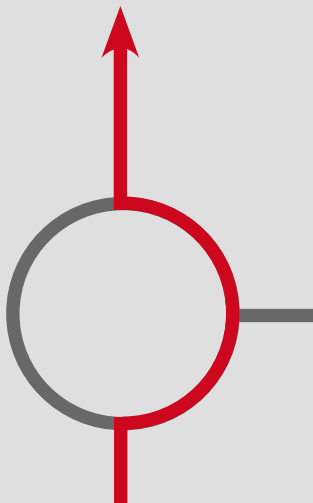
Take roundabout, turn left through the roundabout under the bridge



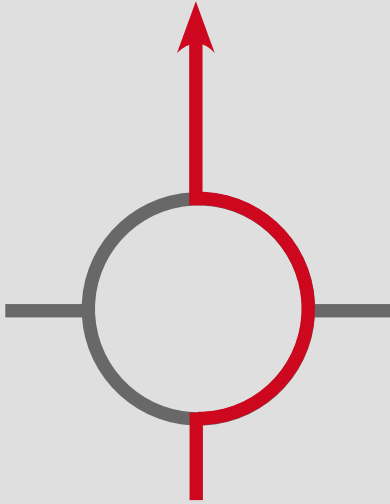
Go straight ahead over No. 2 roundabout under the bridge



Go straight ahead over No. 3 roundabout



Go straight ahead over No. 4 roundabout



Go straight ahead



You have arrived to Elmarco

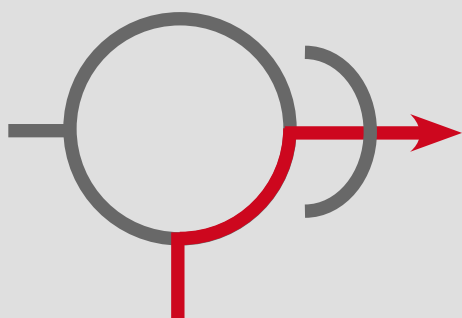


Driving directions to Elmarco from Děčín

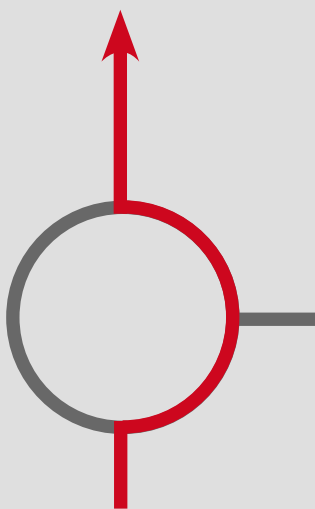
Take the first exit (direction Industrial zone „SEVER“)



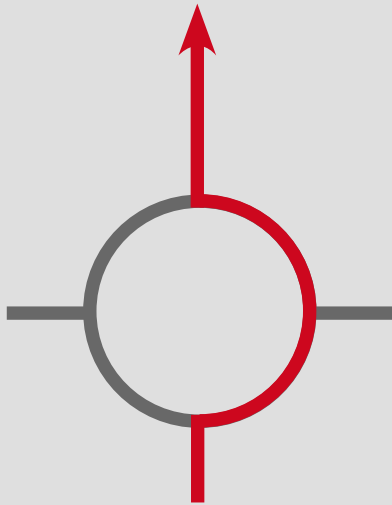
Turn right under the bridge (direction Industry zone „SEVER“)



Go straight ahead over roundabout No. 2



Go straight ahead over
roundabout No. 3



Go straight ahead



You have arrived to Elmarco

